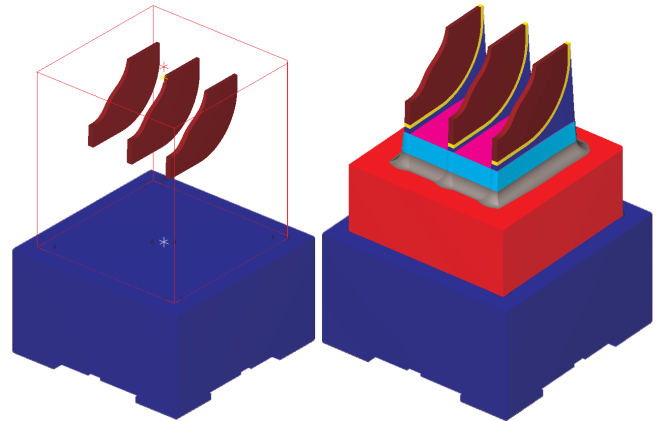
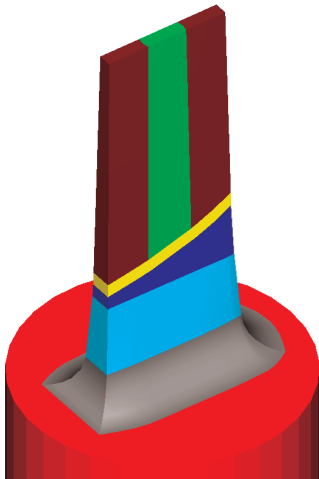


# Moldplus for *Mastercam*.<sup>®</sup> X

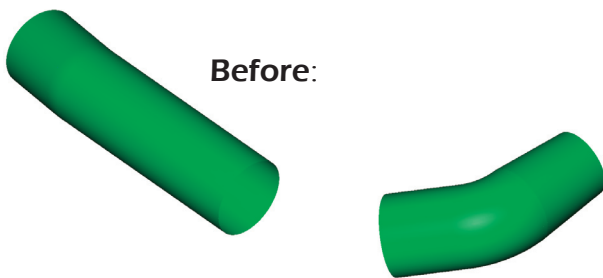
## Electrode Maker.

- **Advanced Interface to create electrodes.**
- **1-click multi step electrode extensions.**
- **Create HTML shop floor documentation to manufacture electrodes.**



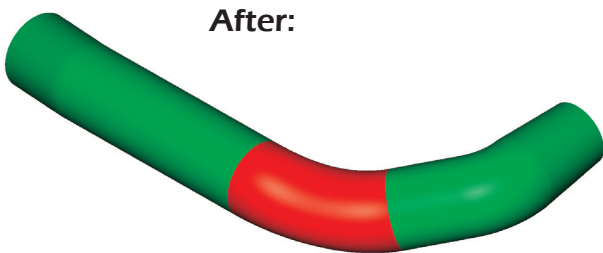
With 1-click, create electrodes with multiple extensions!

## Junction Surface:



Before:

Easily create connecting surfaces (tangential or ruled) between independent surfaces in two clicks.



After:

Powerful surface trimming tools, layout creation and several other tools available to enhance your design productivity.

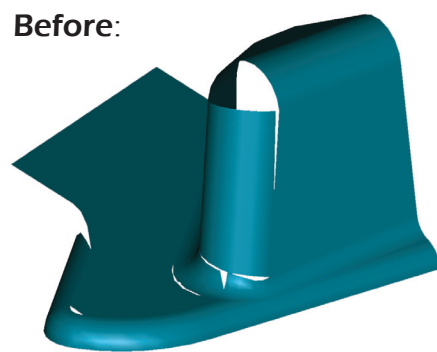
Flexibility: Moldplus, Moldplus Electrode (Professional) and Moldplus Supertrim.

Requirements: Mastercam X SP1 and above.

For more info visit:  
[www.moldplus.com](http://www.moldplus.com)

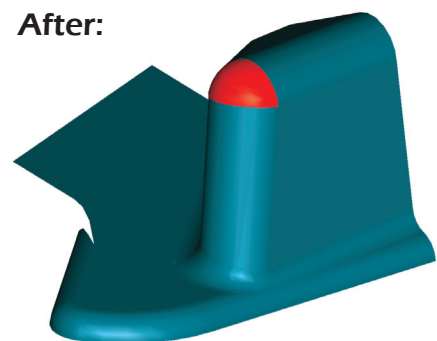


## Trim Editing:



Before:

Manipulate trim surface boundaries and fix badly imported surface geometry.



After:

Reseller:

# Moldplus for *Mastercam*. X

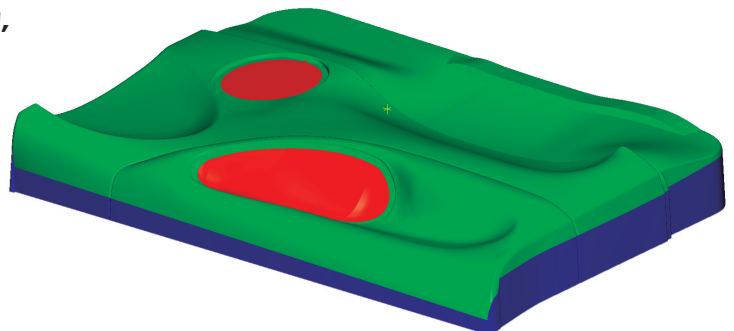
Solutions for today's modelling challenges.

Model-makers, mold-makers, pattern-making, aerospace industry, and anyone involved in surface or Solid modeling, **Moldplus is the solution!**

---

## 1-click Draft Surface Creation

on entire part boundary.  
Ideal for vacuum forming, pattern making, model making industries.



Dark blue surfaces indicate draft surfaces.

---

## Part Analysis

Eliminate prototypes and tedious verification with Draft Angle Analysis. Automatically trim undercut surfaces.



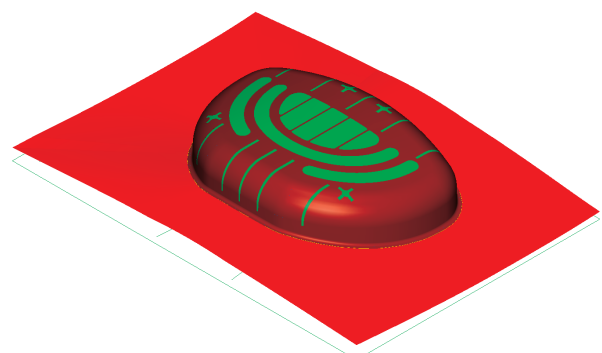
## Core and Cavity Separation

Easily separate core and cavity geometry from complex surface or Solid models.



## Surface Creation Tools.

Parting surfaces with direction control to mold edge, and several other surface creation tools.



---

For more info visit: [www.moldplus.com](http://www.moldplus.com)